

🕒 Z163 15" DIAMETER COMBINATION MAIN ROOF AND OVERFLOW DRAIN WITH LOW SILHOUETTE DOMES AND DOUBLE TOP-SET® DECK PLATE

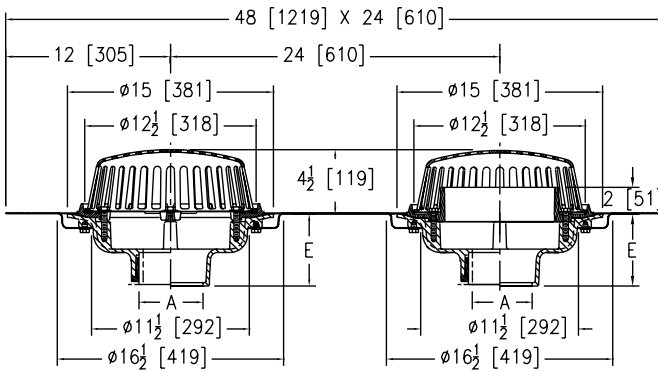


PATENTED

ENGINEERING SPECIFICATION

Zurn Z163 15" diameter roof drain and overflow drain feature Dura-Coated cast iron bodies with combination membrane flashing clamp/gravel guards, double Top-Set® deck plate and low silhouette polydomes.

A Pipe Size inches [mm]	Dome Open Area sq in [cm ²]	Approximate Weight lb [kg]
2 [51], 3 [76], 4 [102]	103 [665]	73 [33]
6 [152]		74 [34]
8 [203]		75 [34]



BEST SELLERS	LIST PRICE
Z163-3NH	2,485.00
ZA163-3NH	2,967.00
ZA163-3NH-EA	4,415.00
Z163-3NL-TC	2,532.00
Z163-4NH	2,485.00
Z163-4NH-EA	3,933.00
ZA163-4NH	2,967.00
ZA163-4NH-EA	4,415.00
Z163-4NL-TC	2,532.00
ZC163-4IP	3,057.00
Z163-6NH	3,087.00
Z163-6NH-DR	5,521.00
Z163-6NH-EA	4,535.00
Z163-6NH-EA-G-SC	5,610.00
Z163-6NH-VP-W3	3,755.00
Z163-6NH-W4	3,507.00
ZA163-6NH	3,575.00
ZA163-6NH-EA	5,023.00
ZC163-6NH	3,502.00
ZC163-6NH-EA	4,950.00
Z163-8NH	3,691.00
Z163-8NH-EA	5,139.00

PREFIXES	DESCRIPTION	PIPE SIZE	LIST PRICE
Z163*	D.C.C.I. Body with Polydome	2", 3", 4"	2,485.00
		6"	3,087.00
		8"	3,691.00
ZA163	D.C.C.I. Body with Aluminum Dome	2", 3", 4"	2,967.00
		6"	3,575.00
		8"	4,178.00
ZC163	D.C.C.I. Body with Cast Iron Dome	2", 3", 4"	2,900.00
		6"	3,502.00
		8"	4,107.00

OUTLETS (SPECIFY PIPE SIZE IN INCHES AND TYPE OF OUTLET)			
OUTLET TYPE	OUTLET DESIGNATION (PIPE SIZE/OUTLET TYPE)	E BODY HT. DIM.	ADD
IC	Inside Caulk	3IC, 4IC, 6IC	5-1/4" N/C
IP	Threaded	2IP, 3IP, 4IP, 6IP, 8IP	3-3/4" 157.00
NH	No-Hub	2NH, 3NH, 4NH, 6NH, 8NH	5-1/4" N/C
NL	Neo-Loc (not recommended for roof drains)	2NL, 3NL, 4NL	4-5/8" N/C

SUFFIXES	ADD
-AR	Acid Resistant Epoxy Coated Finish 2,705.00
🕒 -DE	Deck Extension D.C.C.I. 1,405.00 Galv. 2,085.00
🕒 -DR	Top-Set® Drain Riser 2,434.00
-E	Static Extension 1" thru 4" (Specify Height) D.C.C.I. 1,318.00 Galv. 1,989.00
	For E Extensions Greater than 4" - Per Inch (Specify Height) D.C.C.I. 314.00 Galv. 478.00
-EA	Adjustable Extension Assembly 2-1/8" thru 3-1/2" D.C.C.I. 1,448.00 Galv. 2,147.00
-G	Galvanized Cast Iron (ZC Only) Z 1,917.00 ZC 2,728.00
-HD	6-3/4" High Aluminum Dome Strainer, Open Area 148 Sq. In. (ZA Only) 453.00
-SC	Secondary Clamping Collar 376.00
-SS	Stainless Mesh Screen Over Dome 1,006.00
🕒 -TC	Neo-Loc Test Cap Gasket (2", 3", 4" NL Bottom Outlet Only) 47.00
-VP	Vandal-Proof Secured Top 248.00
-W3	3" Internal Water Dam 420.00
-W4	4" Internal Water Dam 420.00
-XJ	Vertical Expansion Joint (See Z190) -
-84	Stainless Steel Perforated Gravel Guard 1" thru 4" 1,566.00 For Each Additional 1" above 4" - Per Inch (Specify Height) 72.00
-85	Stainless Steel Perforated Extension 1" thru 4" 1,577.00 For Each Additional 1" above 4" - Per Inch (Specify Height) 72.00
-89	2" High External Water Dam (Replaces Internal Dam) N/C

*Regularly furnished unless otherwise specified.

Items designated as Best Sellers are most specified and are generally in stock for shipment.

🕒 This symbol denotes a product that is engineered to reduce installation and rework time.

Supplied By:

877-903-7246
www.commercialplumbingsupply.com

INTRO
ROOF DRAINS
FLOOR DRAINS
T, P, BW VALVES
INTERCEPTORS
CARRIERS
HYDRANTS
CLEANOUTS
WHA
SS DRAINS
FAB SS DRAINS
SAN-FLOOR
TECH INFO